



## Technical Specifications \*

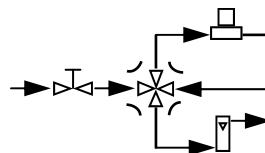
Accuracy:	< 2% of FS range under constant conditions
Analysis Ranges:	0-10, 0-100, 0-1000 PPM, 0-1%, 0-25% (CAL) FS Auto-ranging or manual lock on a single range
Application:	Oxygen analysis in inert, helium, hydrogen, mixed and acid (CO <sub>2</sub> ) gas streams
Approvals:	Certified for use hazardous areas - see lower right
Area Classification:	Class I, Division 1, Groups C, D
Calibration:	3 month interval using certified span gas (preferred for fastest online time) or air with O <sub>2</sub> value approximating 80% of full scale range balance N <sub>2</sub>
Compensation:	Barometric pressure and temperature
Connections:	1/8" compression tube fittings
Controls:	Water resistant keypad; menu driven range selection, calibration and system functions
Display:	Graphical LCD 2.75 x 1.375"; resolution .01 PPM
Enclosure:	Painted aluminum NEMA 4X, 8.6 x 9 x 3", 12 lbs.
Flow:	Not flow sensitive; recommended flow rate 2 SCFH
LED Indicators:	LOW BATT (72 hr. warning); CHARGE mode
Linearity:	> .995 over all ranges
Pressure:	Inlet - regulate to 5-30 psig to deliver 2 SCFH flow; vent - atmospheric
Power:	Rechargeable battery, 60 day cycle, 8 hrs with pump
Recovery Time:	60 sec in air to < 10 PPM in < 1 hour on N <sub>2</sub> purge
Response Time:	90% of final FS reading in 10 seconds
Sample System:	Flow control and sample/bypass valves; flow indicator
Sensitivity:	< 0.5% of FS range
Sensor Model:	GPR-12-333 for non-acid (CO <sub>2</sub> ) gas streams XLT-12-333 for gas mixture with > 0.5% CO <sub>2</sub>
Sensor Life:	24 months in < 1000 PPM O <sub>2</sub> at 25°C and 1 atm
Signal Output:	0-1V FS
Temp. Range:	5° to 45°C (GPR sensor), -20° to 45°C (XLT sensor)
Warranty:	12 months analyzer; 12 months sensor
Wetted Parts:	Stainless steel

*ATEX Certified for Hazardous Areas*



## **GPR-1200 ATEX** **Portable PPM O<sub>2</sub> Analyzer**

**Rechargeable Battery Powered**



Integral stainless steel bypass sample system significantly increases user productivity. The bypass valve isolates the sensor from high oxygen levels when changing sample lines.

## Advanced Sensor Technology

- Fast Recovery to < 10 PPM from Exposure to Air
- Sensor Life, Warranty and Performance is Unmatched
- Excellent Compatibility in 0-100% CO<sub>2</sub>
- Extended Operating Temperature -20°C

**Sensitivity 0.5% Full Scale**

**ATEX Certified - Directive 94/9/EC**  
**Examination Cert: INERIS 10ATEX0020**



**II 2 G**  
**Ex ib IIB T4**  
**T<sub>amb</sub> -20°C to +50°C**



0080

**ISO 9001:2008 Certified**  
**INTERTEK Certificate No. 485**



## Optional Equipment

- Carrying case with custom foam insert
- Sample conditioning - pump, filter, scrubbers - contact factory

\* Subject to change without notice.



## Technical Specifications \*

Accuracy:	< 2% of FS range under constant conditions
Analysis Ranges:	0-10, 0-100, 0-1000 PPM, 0-1%, 0-25% (CAL) FS Auto-ranging or manual lock on a single range
Application:	Oxygen analysis in inert, helium, hydrogen, mixed and acid (CO <sub>2</sub> ) gas streams
Area Classification:	General purpose
Calibration:	3 month interval using certified span gas (preferred for fastest online time) or air with O <sub>2</sub> value approximating 80% of full scale range balance N <sub>2</sub>
Compensation:	Barometric pressure and temperature
Connections:	1/8" compression tube fittings
Controls:	Water resistant keypad; menu driven range selection, calibration and system functions
Display:	Graphical LCD 2.75 x 1.375"; resolution .01 PPM
Enclosure:	Painted aluminum NEMA 4X, 8.6 x 9 x 3", 12 lbs.
Flow:	Not flow sensitive; recommended flow rate 2 SCFH
LED Indicators:	LOW BATT (72 hr. warning); CHARGE mode
Linearity:	> .995 over all ranges
Pressure:	Inlet - regulate to 5-30 psig to deliver 2 SCFH flow; vent - atmospheric
Power:	Rechargeable battery, 60 day cycle, 8 hrs with pump
Recovery Time:	60 sec in air to < 10 PPM in < 1 hour on N <sub>2</sub> purge
Response Time:	90% of final FS reading in 10 seconds
Sample System:	Flow control and sample/bypass valves; flow indicator
Sensitivity:	< 0.5% of FS range
Sensor Model:	GPR-12-333 for non-acid (CO <sub>2</sub> ) gas streams XLT-12-333 for gas mixture with > 0.5% CO <sub>2</sub>
Sensor Life:	24 months in < 1000 PPM O <sub>2</sub> at 25°C and 1 atm
Signal Output:	0-1V FS
Temp. Range:	5° to 45°C (GPR sensor), -20° to 45°C (XLT sensor)
Warranty:	12 months analyzer; 12 months sensor
Wetted Parts:	Stainless steel

## Optional Equipment

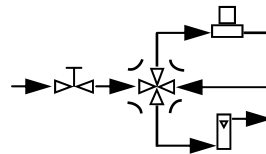
- Carrying case with custom foam insert
- Sample conditioning - pump, filter, scrubbers - contact factory

\* Subject to change without notice.



## GPR-1200 Portable PPM O<sub>2</sub> Analyzer

Rechargeable Battery Powered



Integral stainless steel bypass sample system significantly increases user productivity. The bypass valve isolates the sensor from high oxygen levels when changing sample lines.

## Advanced Sensor Technology

- > Fast Recovery to < 10 PPM from Exposure to Air
- > Unmatched Sensor Life, Warranty and Performance
- > Excellent Compatibility in 0-100% CO<sub>2</sub>
- > Extended Operating Temperature -20°C

Sensitivity 0.5% Full Scale

Auto Ranging or Fixed Single

0-1 V Signal Output

Operates in Charging Mode

Low Battery Warning LED

Stainless Steel Wetted Parts

ISO 9001:2008 Certified  
INTERTEK Certificate No. 485

